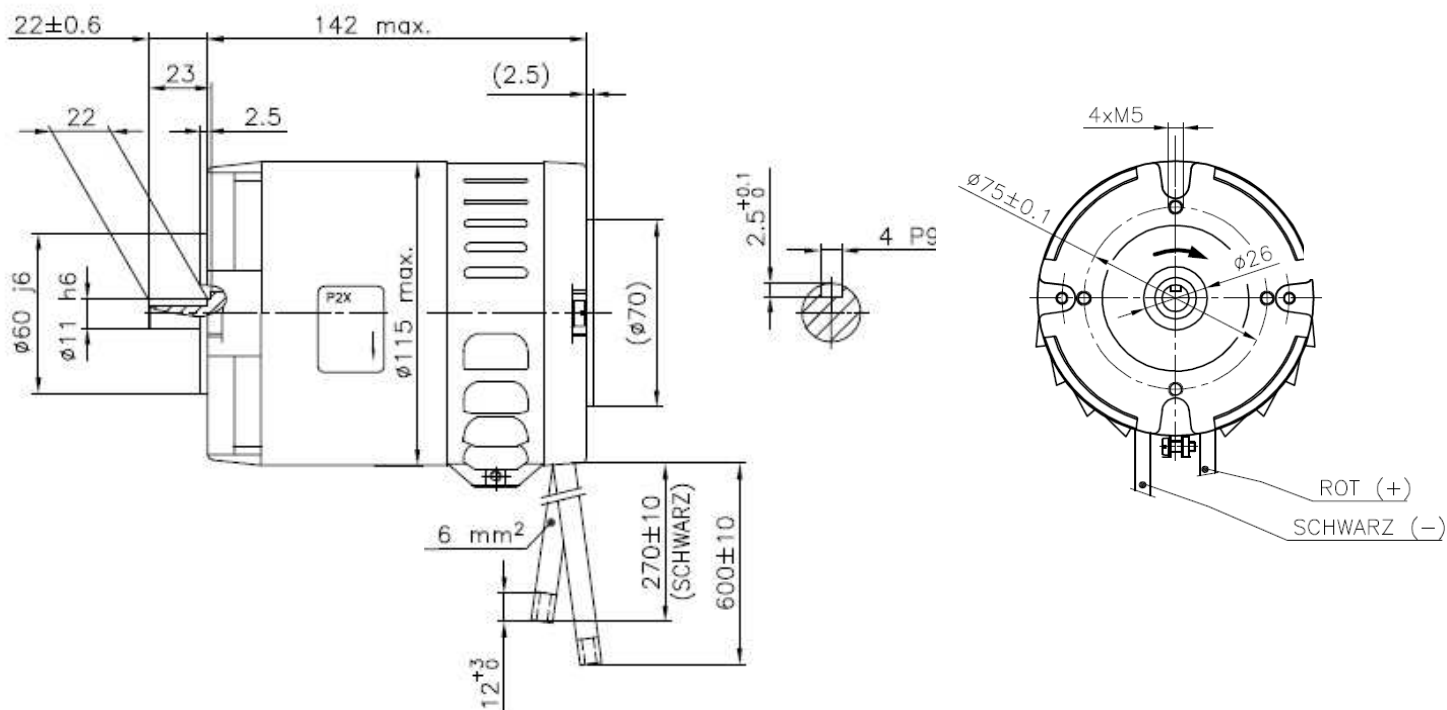


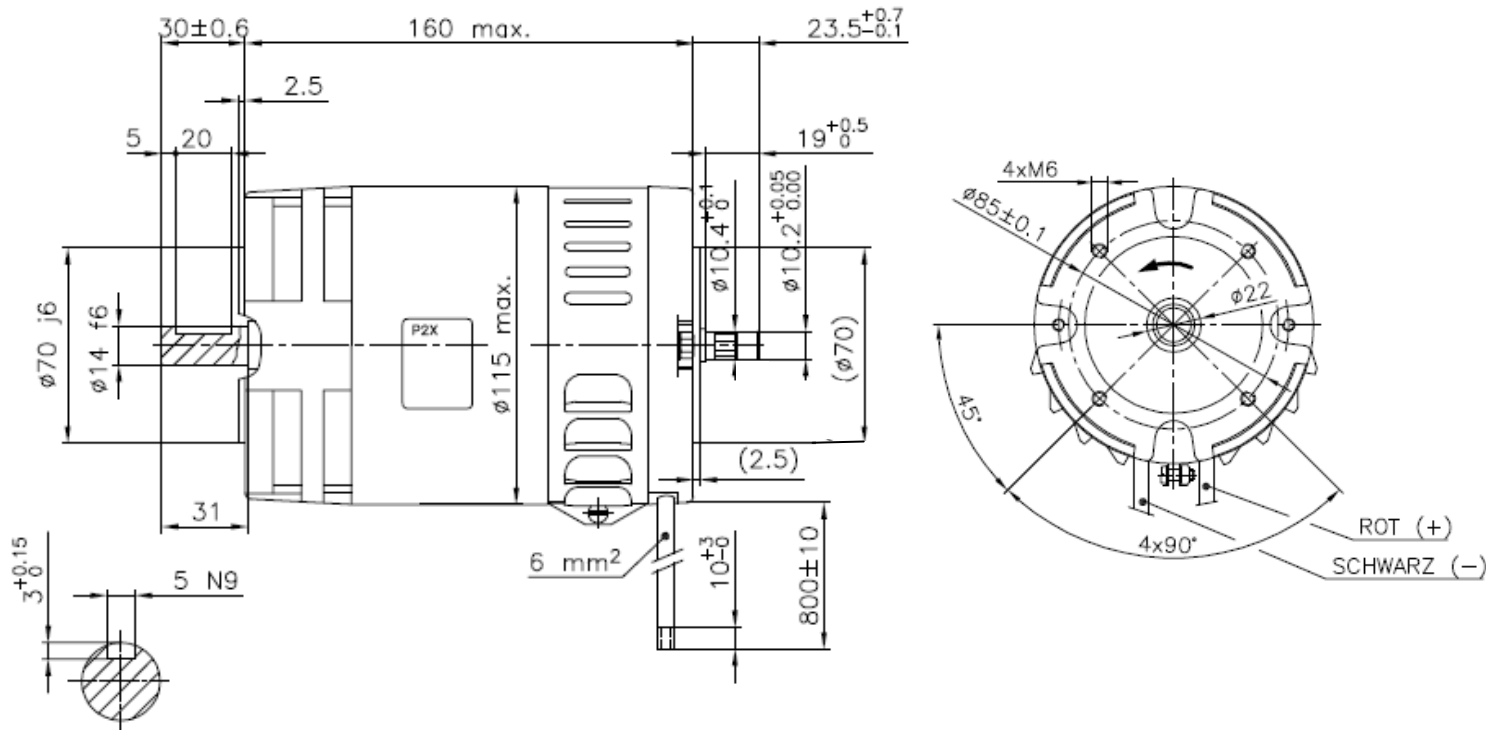
- Komutátorové motory s permanentními magnety
- D.C. permanent-magnet motors
- Gleichstrommotoren mit Dauermagneterregung

Typ Type Typ	Napětí Voltage Spannung [V=]	Výkon Output Leistung [W]	Proud Current Strom [A]	Otáčky Speed Drehzahl [1/min]	Smysl točení Direction of rotation Drehrichtung	Krytí Design Schutzgrad	Provoz Duty Betrieb	Hmotnost Weight Masse [kg]
P2XO494	12	300	34	2500	vpravo, CW, rechts	IP 20	S2 90 min.	4,5
P2XR492	24	600	33	3600	oba, both, beide	IP 20	S1	4,9
P2XR501	24	600	32	3500	vpravo, CW, rechts	IP 20	S2 90 min.	4,9
P2XR504	36	600	21	3600	vpravo, CW, rechts	IP 20	S1	5,1
P2XR506	36	600	21	3600	vlevo, CCW, links	IP 20	S1	5,1
P2XR507	24	600	33	3600	vlevo, CCW, links	IP 20	S1	5,1
P2XR508	24	400	22	2800	vpravo, CW, rechts	IP 20	S1	4,9
P2XR516	36	600	21	3600	vpravo, CW, rechts	IP 20	S1	4,9
P2XR520	12	300	34	2500	oba, both, beide	IP 20	S2 90 min.	4,5
P2XR523	24	600	33	3600	oba, both, beide	IP 20	S1	7,1
P2XR558	36	600	21	3600	vlevo, CCW, links	IP 20	S1	4,9
P2XZ502	24	750	38	2800	vlevo, CCW, links	IP 20	S2 90 min.	8,2
P2XZ503	36	750	26	2800	vpravo, CW, rechts	IP 20	S1	7,9
P2XZ505	36	750	26	2800	vlevo, CCW, links	IP 20	S1	7,9
P2XZ522	24	750	38	2800	vpravo, CW, rechts	IP 20	S1	7,9

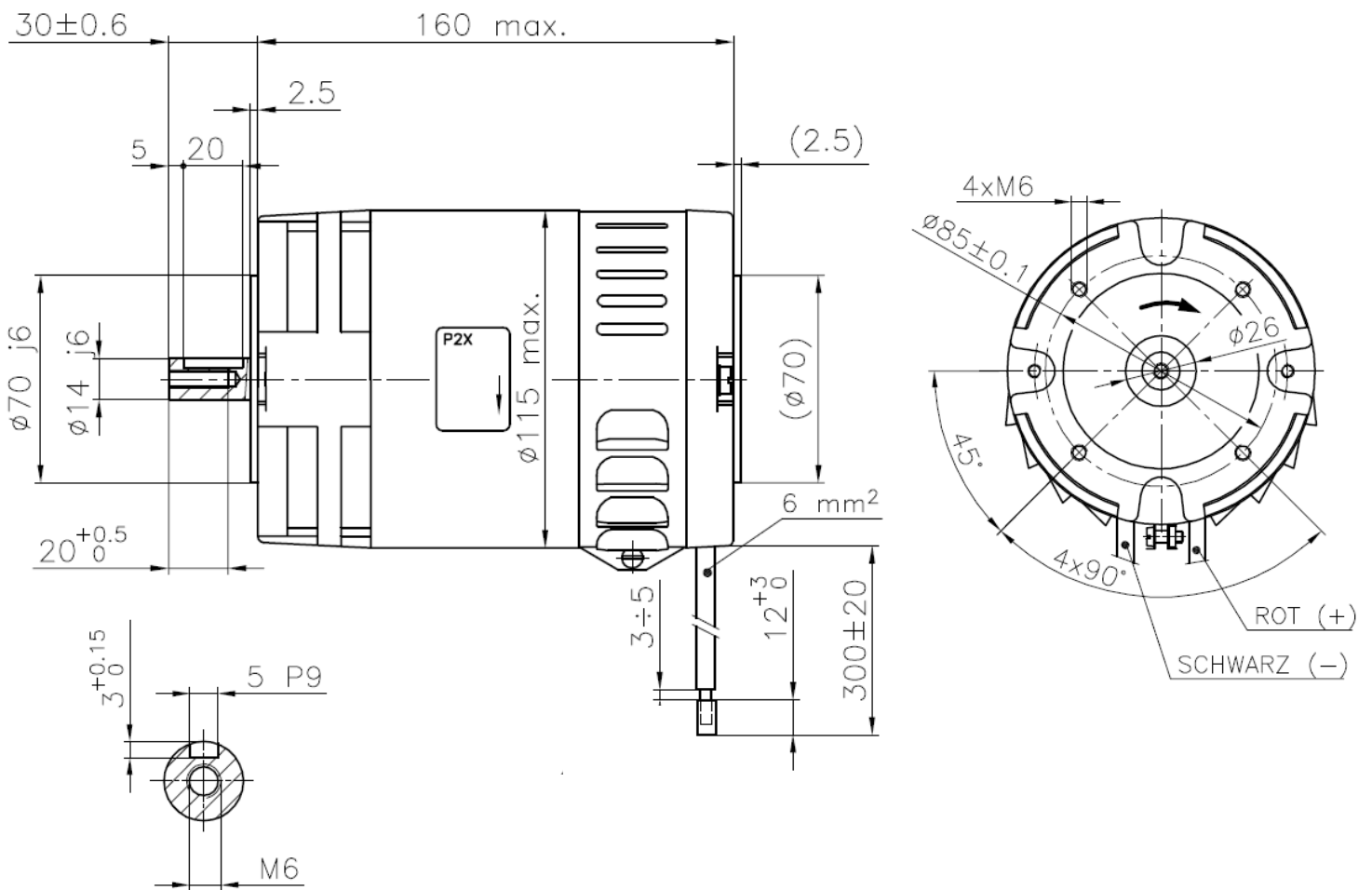
P2XO494



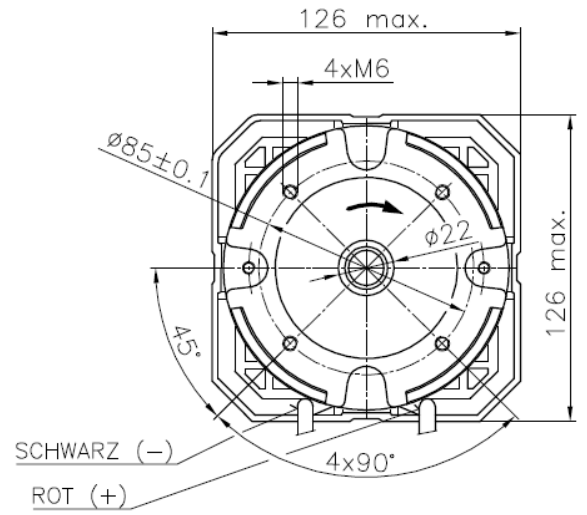
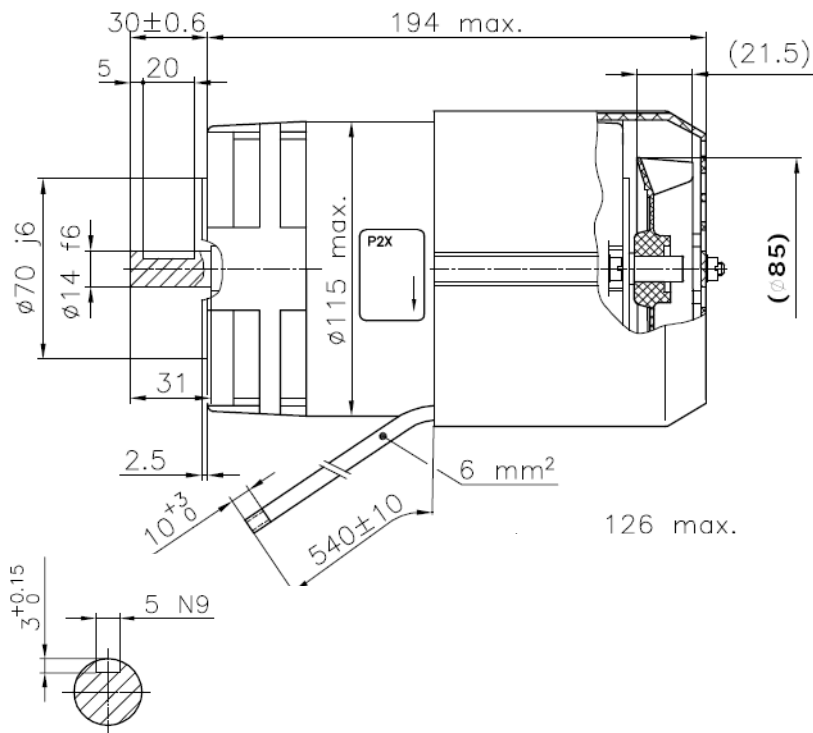
P2XR492



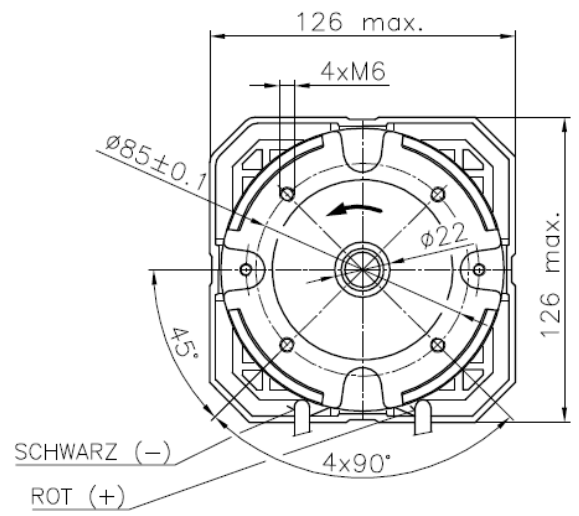
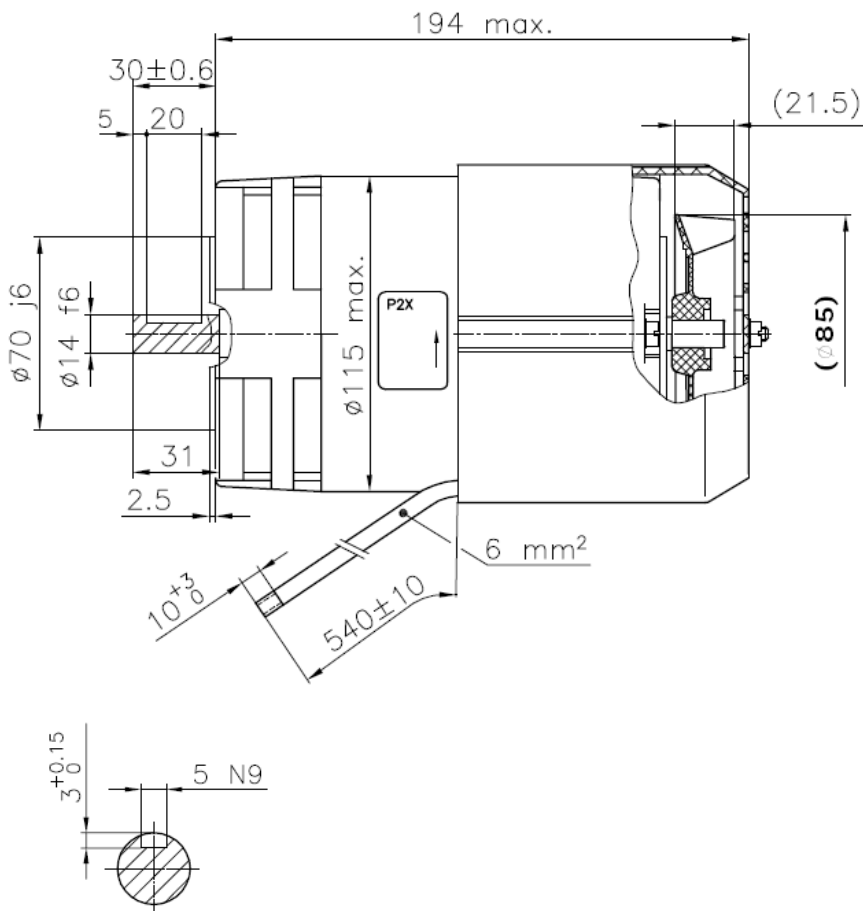
P2XR501



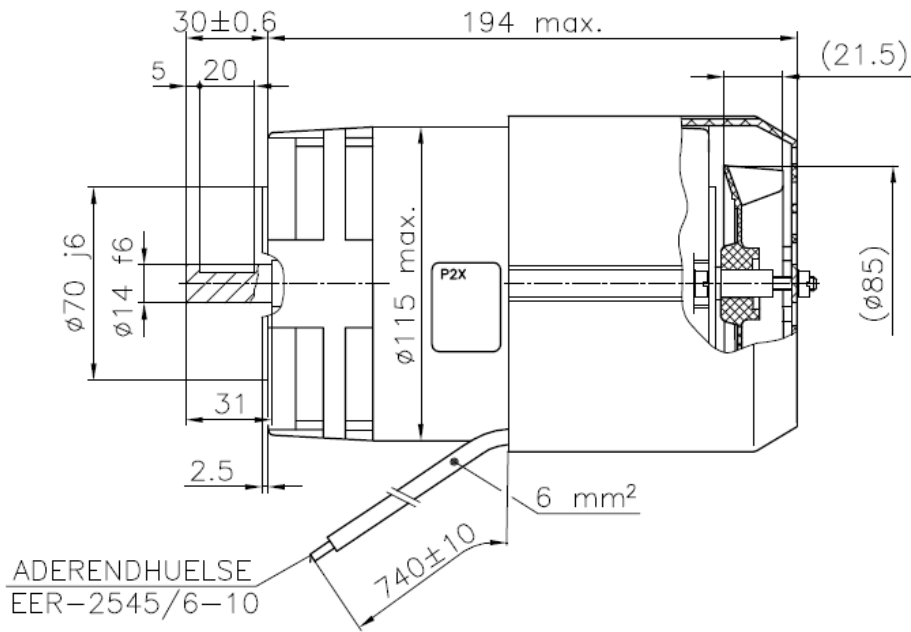
P2XR504



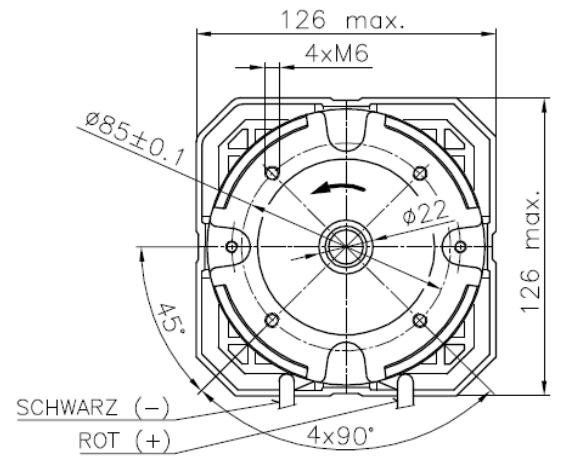
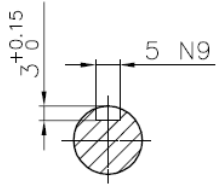
P2XR506



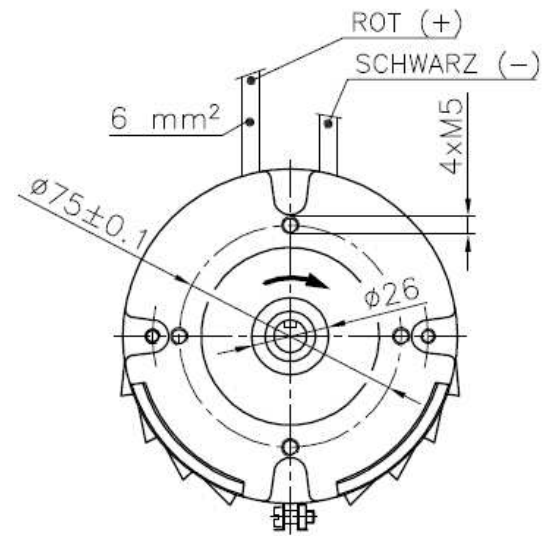
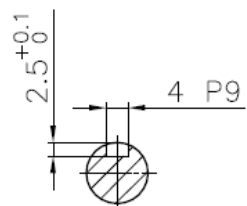
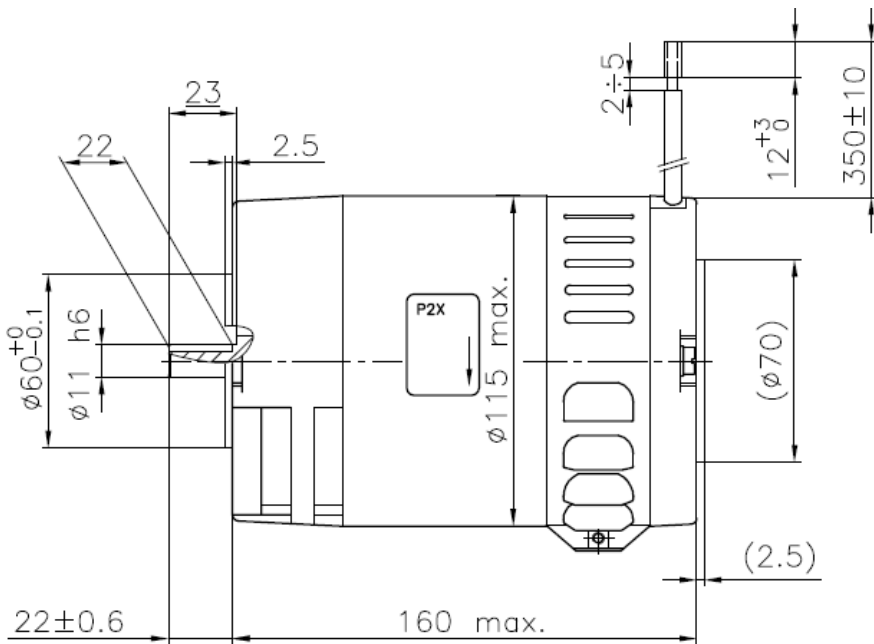
P2XR507



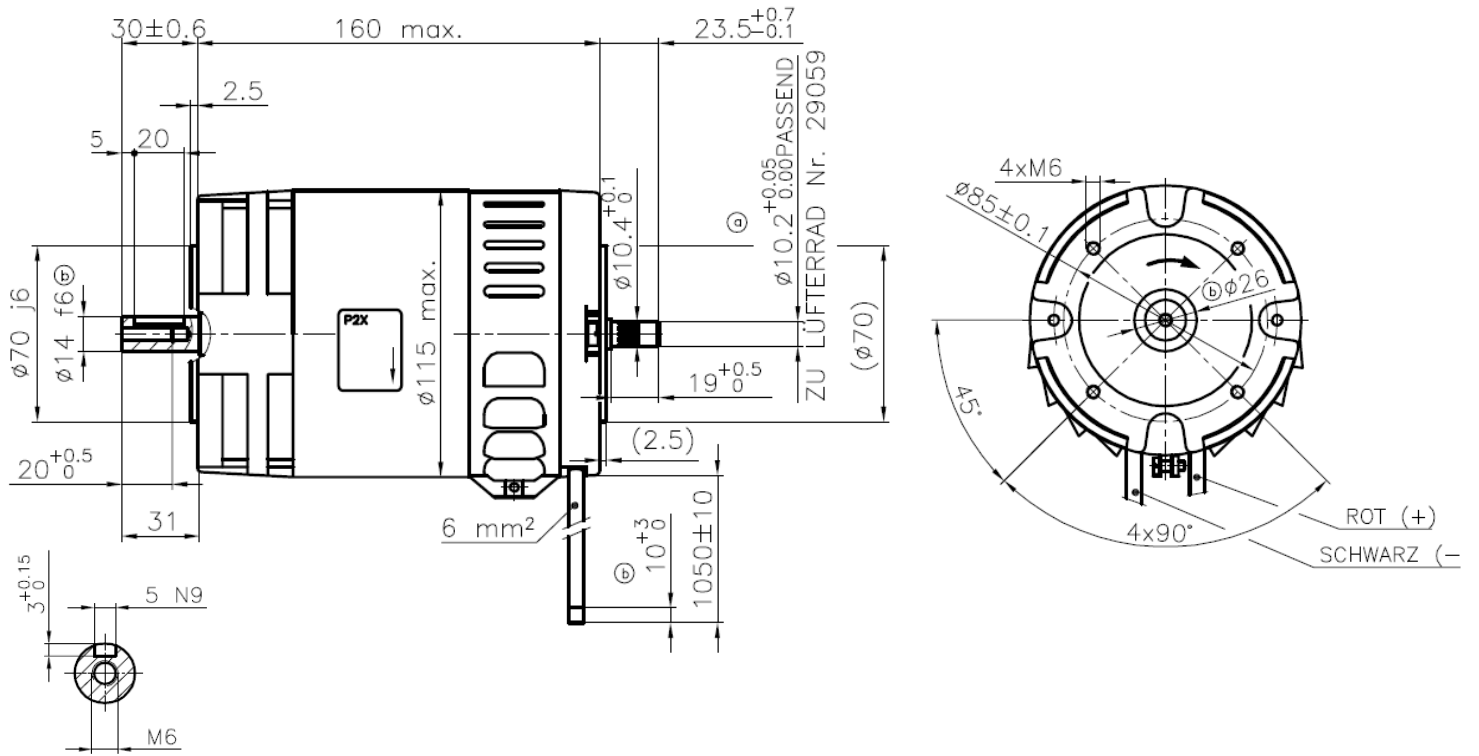
ADERENDHUELSE
EER-2545/6-10



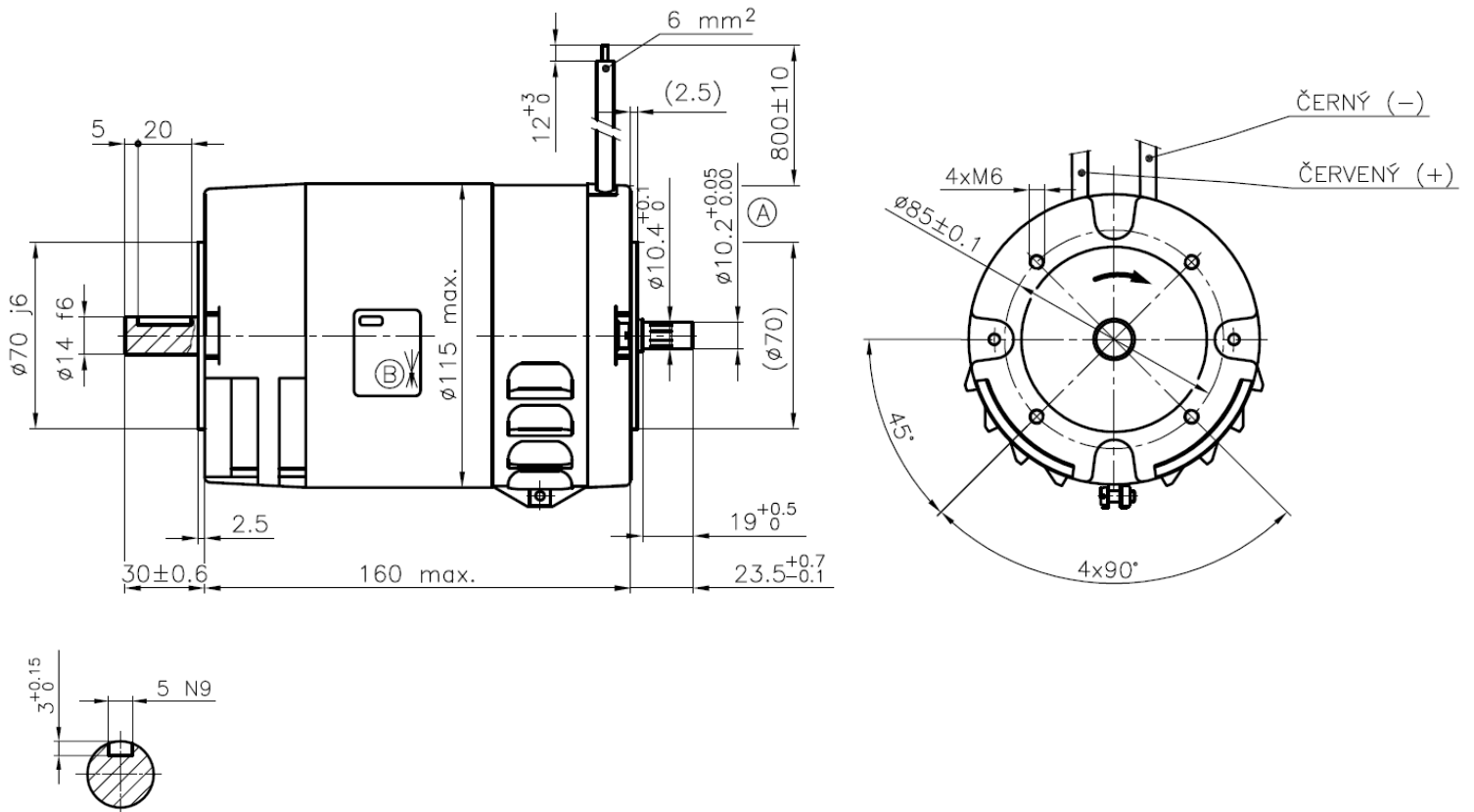
P2XR508



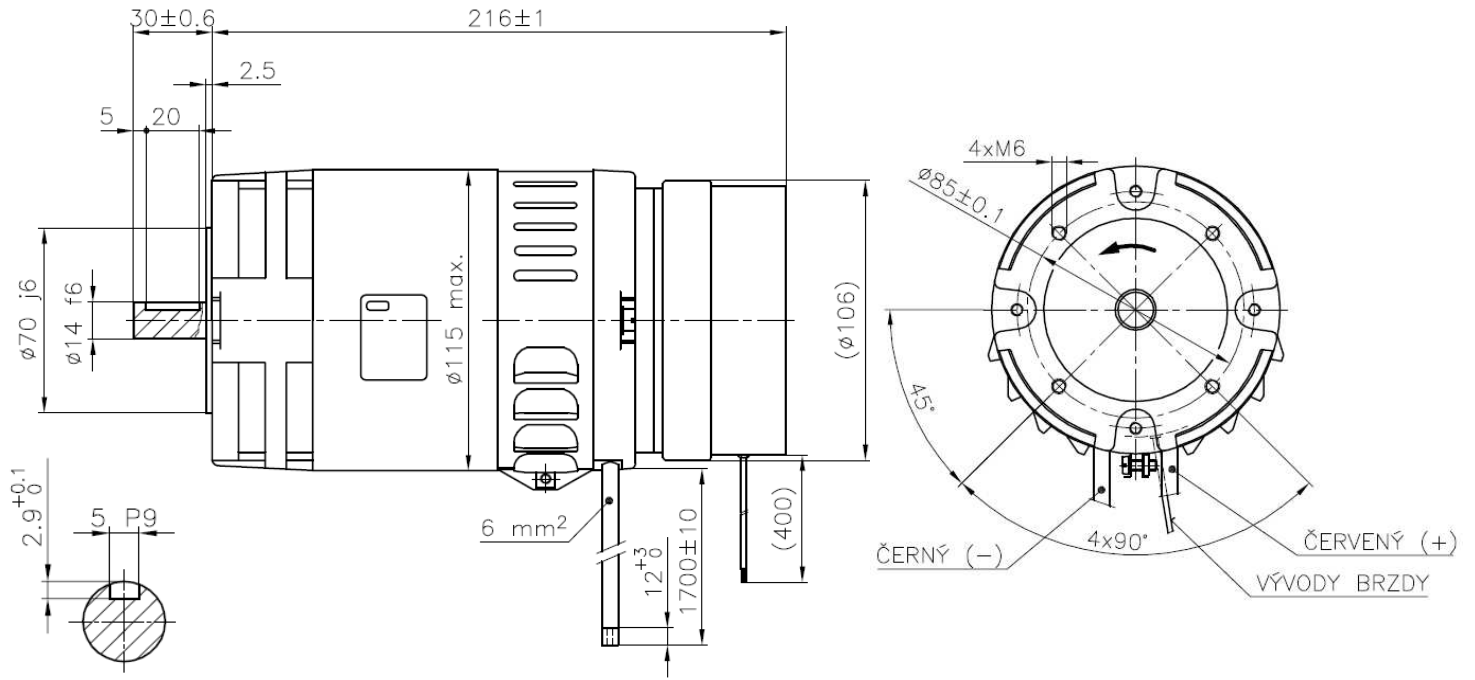
P2XR516



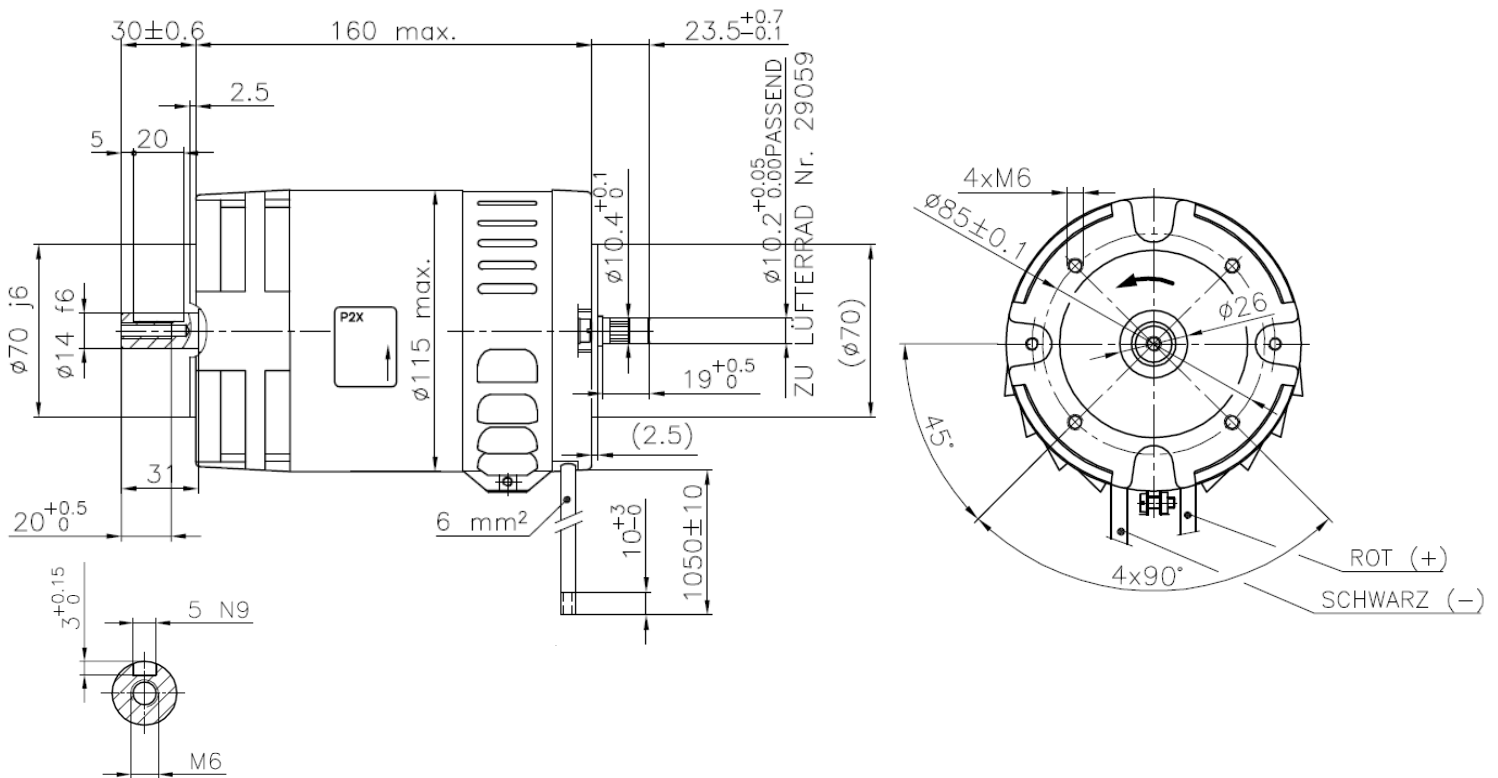
P2XR520



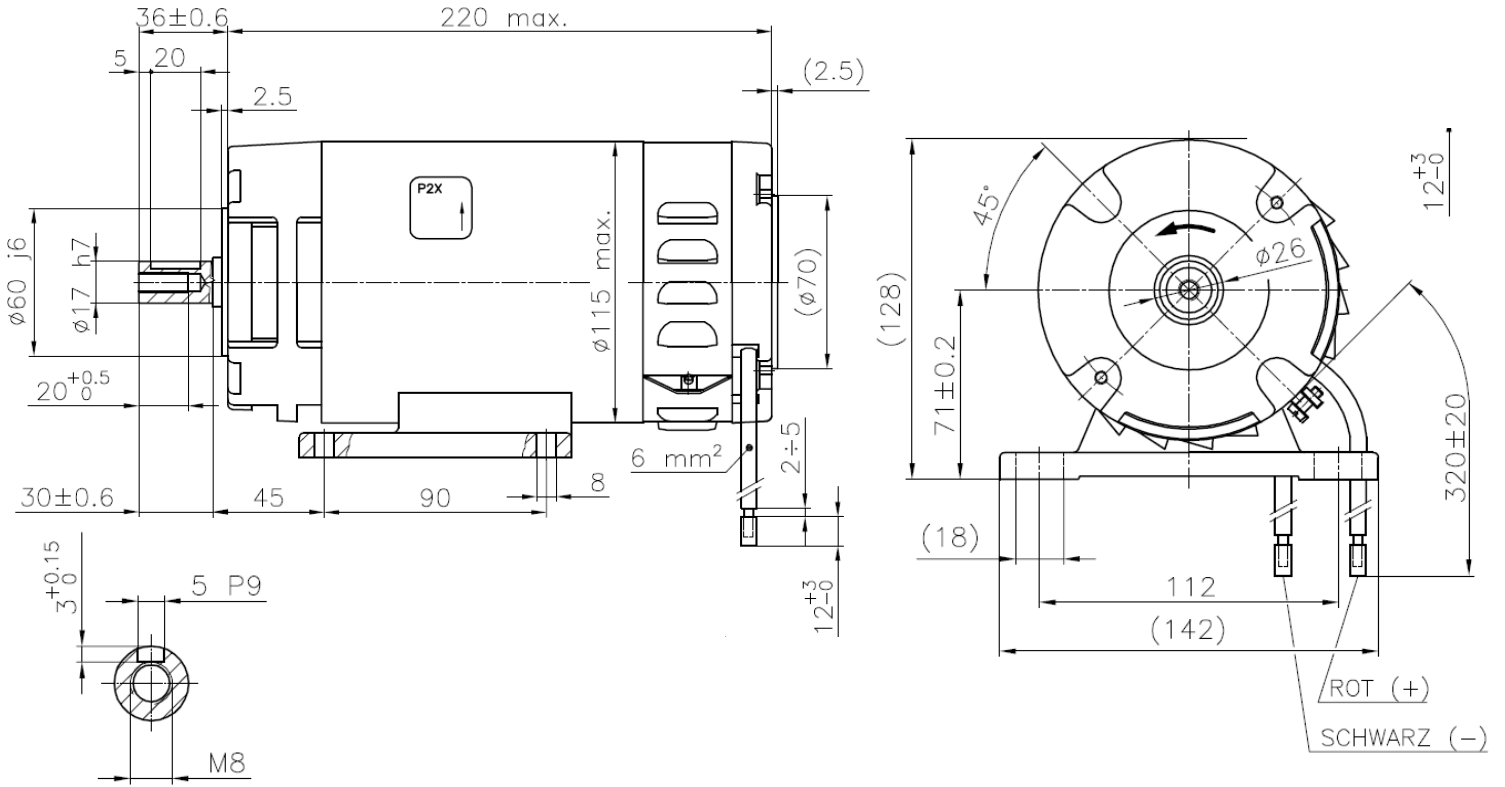
P2XR523



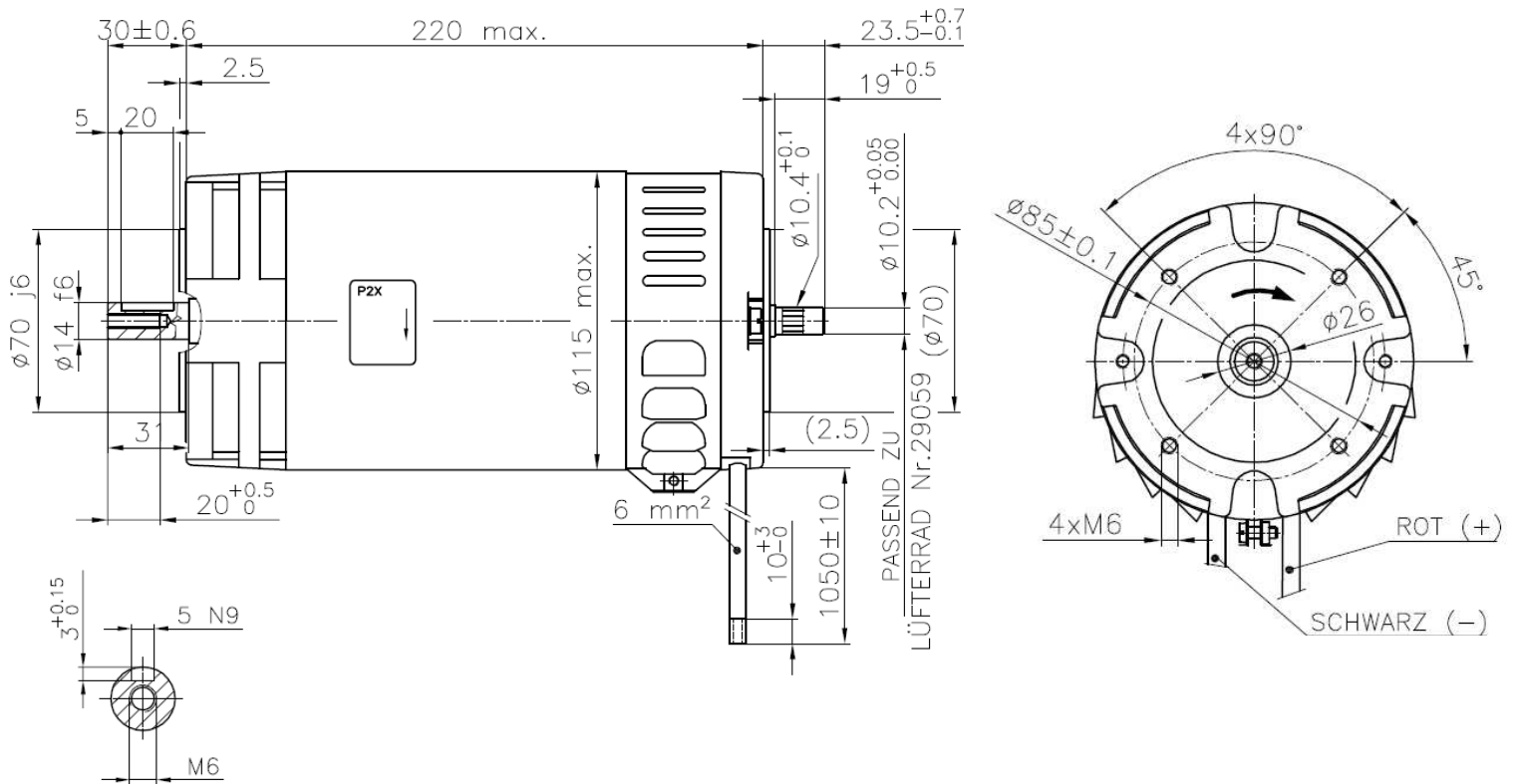
P2XR558



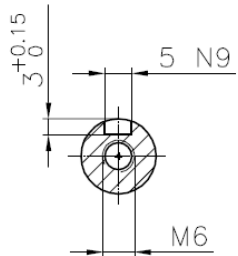
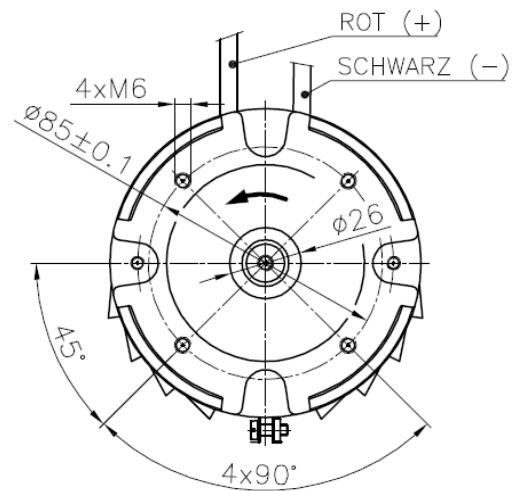
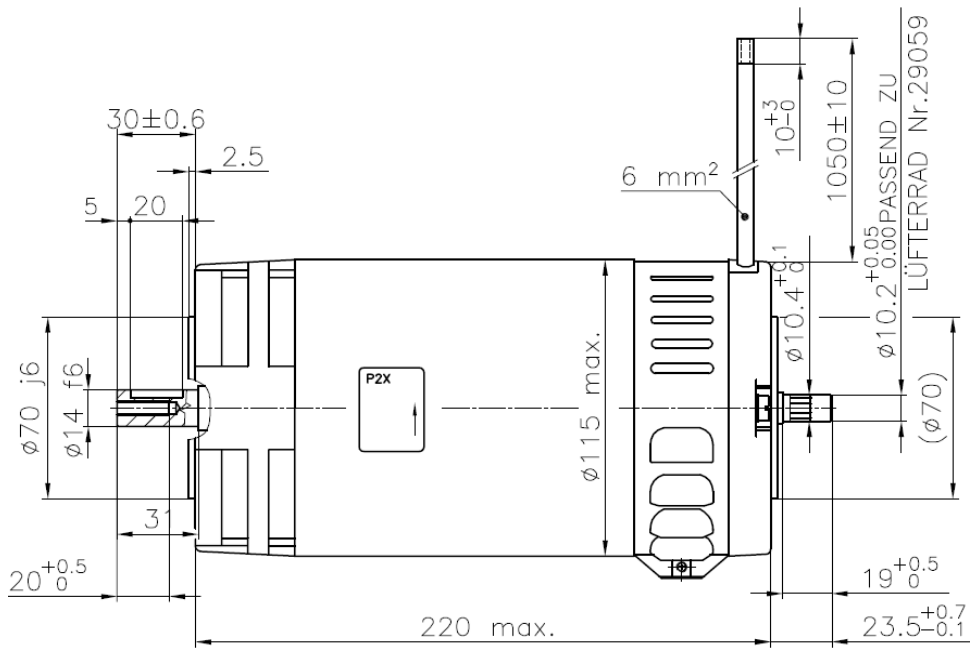
P2XZ502



P2XZ503



P2XZ505



P2XZ522

